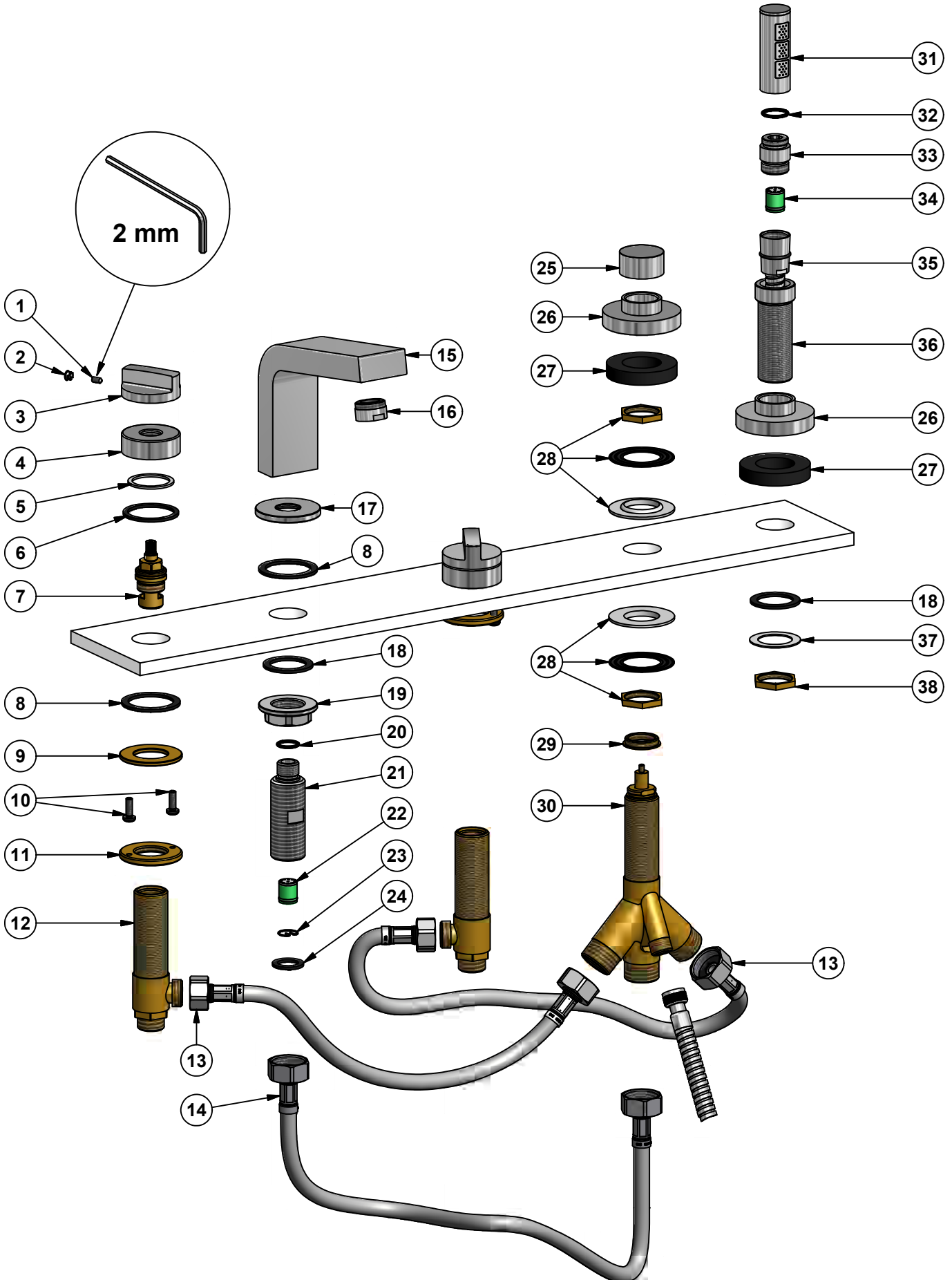
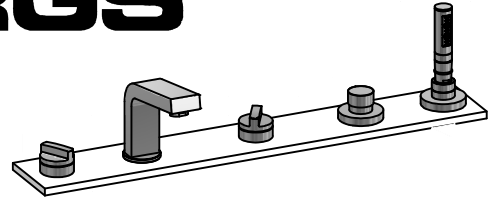


# SVEDBERGS®

S

GB

## 96555 (Krom, Chrome)



<b>Pos.</b>	<b>Ant/Qty</b>	<b>Titel / Title</b>	<b>Art.No.</b>
1	2	Insexskruv M4x8 / Inox screw M4x8	
2	2	Täckhatt krom / Cover nut chrome	
3	2	Blandarhandtag / Mixer handle	
4	2	Basing / Base ring	
5	2	Antifriktionsring / Antifriction ring	
6	2	Gummipackning 42,5x35,5x2 / Rubber packing 42,5x35,5x2	
7	2	Keramisk tätning / Ceramic cartridge	98841
8	3	Gummipackning 45x35x2 / Rubber packing 45x35x2	
9	2	Metalltätning / Metal sealing	
10	4	Skruv M5x15 / Screw M5x15	
11	2	Ringmutter / Ring nut	
12	2	Anslutningskoppling / Connection piece	
13	2	Anslutningsslang G <sup>1</sup> / <sub>2</sub> / G <sup>3</sup> / <sub>4</sub> / Connection hose G <sup>1</sup> / <sub>2</sub> / G <sup>3</sup> / <sub>4</sub>	98876
14	1	Anslutningsslang G <sup>3</sup> / <sub>4</sub> / Connection hose G <sup>3</sup> / <sub>4</sub>	98876
15	1	Blandarpip HJ / Spout HJ	
16	1	Perlator krom / Aerator chrome	
17	1	Basing / Base ring	
18	2	Gummipackning 38x28x2 / Rubber packing 38x28x2	
19	1	Fastsättningsmutter / Fastening nut	
20	1	O-ring 14x1,78	
21	1	Fastsättningskolv / Fixing body	
22	1	Backventil Ø14 / Non return valve Ø14	
23	1	Låsring för backventil / Locking ring for non return valve	
24	1	Gummitätning G <sup>3</sup> / <sub>4</sub> " (R20) / Rubber sealing G <sup>3</sup> / <sub>4</sub> " (R20)	98876
25	1	Omkastarvred / Diverter lever	
26	2	Basing / Base ring	
27	2	Skyddstätning för bas / Protection cover for base	
28	1	Fixeringsset / Fixing set	
29	1	Täckring / Cover ring	
30	1	Omkastare / Diverter	
31	1	Duschhandtag / Shower handle	98877
32	1	O-ring 17,17x1,78	98877
33	1	Anslutning duschhandtag / Connection shower handle	98877
34	1	Backventil Ø15 / Non return valve Ø15	98877
35	2	Duschslang G <sup>1</sup> / <sub>2</sub> / G <sup>3</sup> / <sub>8</sub> L:200 / Shower hose G <sup>1</sup> / <sub>2</sub> / G <sup>3</sup> / <sub>8</sub> L:200	98848
36	1	Fastsättningskolv / Fixing support	
37	1	Metallring 39x26,5x1 / Washer 39x26,5x1	
38	1	Anslutningsmutter / Connection nut	